

WINDOWSTORY®

WINTEC

Head office 206, Opoan-ro, Opo-eup, Gwangju-si, Gyeonggi-do, 12790, South Korea

Factory 77, Daesosandan-ro, Daeso-myeon, Eumseong-gun, Chungcheongbuk-do, 27671, South Korea

E master@wintekorea.kr

T +82-31-765-7581

F +82-31-765-7526

W www.wintekorea.kr

2018
COLLECTION

2018 ISSUE
ABOUT WINTEC
GLOBAL MARKET
WINDOWSTORY BRAND



2018 ISSUE	2
ABOUT WINTEC	6
GLOBAL MARKET	8
WINDOW STORY BRAND	9



WINDOW STORY
2018 COLLECTION

10
12





Cordless

- Child Safe
- Clean design and function

Easy Control

- Light & Smooth
- Intuitive operation

Inside mount

Auto Balance System



Most cordless systems are not ideal for inside mount due to the secondary pull necessary to release the spring and lift the shade. With our newly designed Auto Balance System (ABS) there is no need for a secondary pull, so the shade can literally sit on the window and remain fully operational. ABS is ideal for inside mount applications. This also means a shades max drop can be all the way to the floor in necessary applications. With existing cord-free options this is not possible.

The same function above makes Auto Balance System perfect for FULL BLACKOUT solutions using side channels. Because of its function ABS can be precisely set and lifted from a 100% down-set position.

Given there is no secondary pull to release necessary, we also reduce the tendency for the user to pull too hard on the fabric to raise the shade. This can cause the fabric band to pull away from the tube. With our ABS this is of no concern.

Make large shades with heavy fabric! There is no weight limit for Auto Balance System. Your heaviest solar screen will lift with the ease of one finger. Try it for yourself!

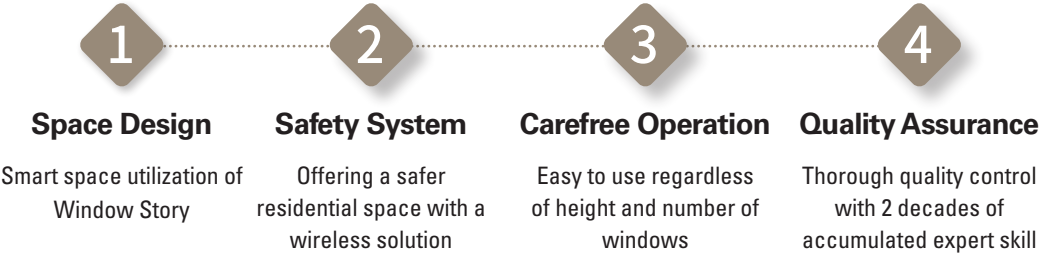


"Convenient, Wireless solution "

3D SHADES + MOTORIZED SYSTEM

MOTORIZED SYSTEM

Motorization offers unrivaled convenience and comfort. Above all, motorization offers a peace of mind from child safety concerns by eliminating operating cords.



WINTRON®

Wintron is a battery operated DC motor capable of operating up to 15kg weight. One remote control can operate up to 7 blinds. With no need for an electrician, the Wintron can be applied to 3D Shades, Zebra, Roller Blinds.

BATTERY PACK
ROLLER BLIND, ZEBRA SHADE, 3D SHADE, HONEYCOMB BLIND, WOOD BLIND

RECHARGEABLE BATTERY PACK
ROLLER BLIND, ZEBRA SHADE, 3D SHADE

WTRON-R07-A
REMOTE- CONTROL Transmitter (7 channels)

ABOUT WINTEC



WINTEC

Since its establishment in 1994, WINTEC KOREA has combined technological excellence, innovation, and field expertise accumulated over 20 years of constant research and development, to define its position as a coveted global market leader in window furnishing technology.

WINTEC KOREA's cutting edge infrastructure and technological capabilities, enable the production of the highest quality fabrics, componentry, finished blinds, and even logistics and A/S management. WINTEC's streamlined start to finish capability give WINTEC unrivaled competitive advantages.

WINTEC KOREA is committed to constantly creating and developing safe and environmentally friendly products. WINTEC KOREA continues to work dynamically towards its vision of becoming the 'best blind & shade company' in the world.



DESIGN



WINTEC KOREA combines to fulfill esthetic elements and high performance design

PRODUCTION



Achieve thorough quality control, running all production processes directly.

R&D CENTER



Established the annex R&D Lab for to ensure safe and eco-friendly products

CERTIFICATE



We manufacture products that meet the highest ISO ratings and industry standards.

AFTER SERVICE



Vertically integrated, we control every process from beginning to end.

GLOBAL MARKET



EXHIBITION



WINTec KOREA currently exports to over 70 countries. With our status as one of the world leaders in the industry, WINTec KOREA participates in all the major trade exhibitions globally year after year, constantly seeking and expanding new markets.

- | | |
|---|--|
| 2014
HEIMTEXTIL (FRANKFURT)
R+T ASIA (SHANGHAI)
SUPER EXPO (AUSTRALIA) | 2016
HEIMTEXTIL (FRANKFURT)
R+T ASIA (SHANGHAI)
R+T SOUTH AMERICA (BRAZIL) |
| 2015
HEIMTEXTIL (FRANKFURT)
R+T (STUTT GART)
R+T ASIA (SHANGHAI) | 2017
HEIMTEXTIL (FRANKFURT)
R+T ASIA (SHANGHAI)
R+T (STUTT GART)
R+T ASIA (SHANGHAI) |

WINDOW STORY



WINDOW STORY
BRAND

WINDOW STORY is the franchise retail brand of WINTec KOREA. There more than 80 stores throughout Korea that offer consumers unrivaled quality, design, variety, and customer service.

With WINTec KOREA's superior product competitiveness and marketing strategies, WINDOW STORY stores are quickly expanding beyond Korea and into the global market. We have recently opened WINDOW STORY stores in China, Australia, Hongkong, Macau, Singapore, Taiwan, and Nigeria.



WINDOW STORY EVOLUTION

WINDOWSTORY®



PRESTIGE

Our Prestige System was developed independently. Utilizing precision machined metal bearings, this system is designed for the easy operation of very large and heavy blinds..

COMPONENT

Our components offer the ultimate in efficiency and capability. All of our components can be used in the manufacturing of three main categories: 3D Shade, Zebra, and Roller Shade. We offer a wide array of sizes and colors to suit all of your needs.

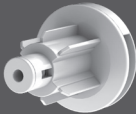
SYSTEM DESIGN

Aluminum profiles have a strong ability to resist heat and are suitable for a variety of window systems. Our anodizing and chrome plating processes make our products stylish, and also strengthens with anti-corrosive characteristics, resulting in the most durable products available in the market today.

WINDOW STORY EDGE

POWER

We use a multi-gear and chain in the clutch enabling the dispersion of energy. This results in a system that is incredibly lite and easy to lift. We like to say it does the heavy lifting for you!



STYLE

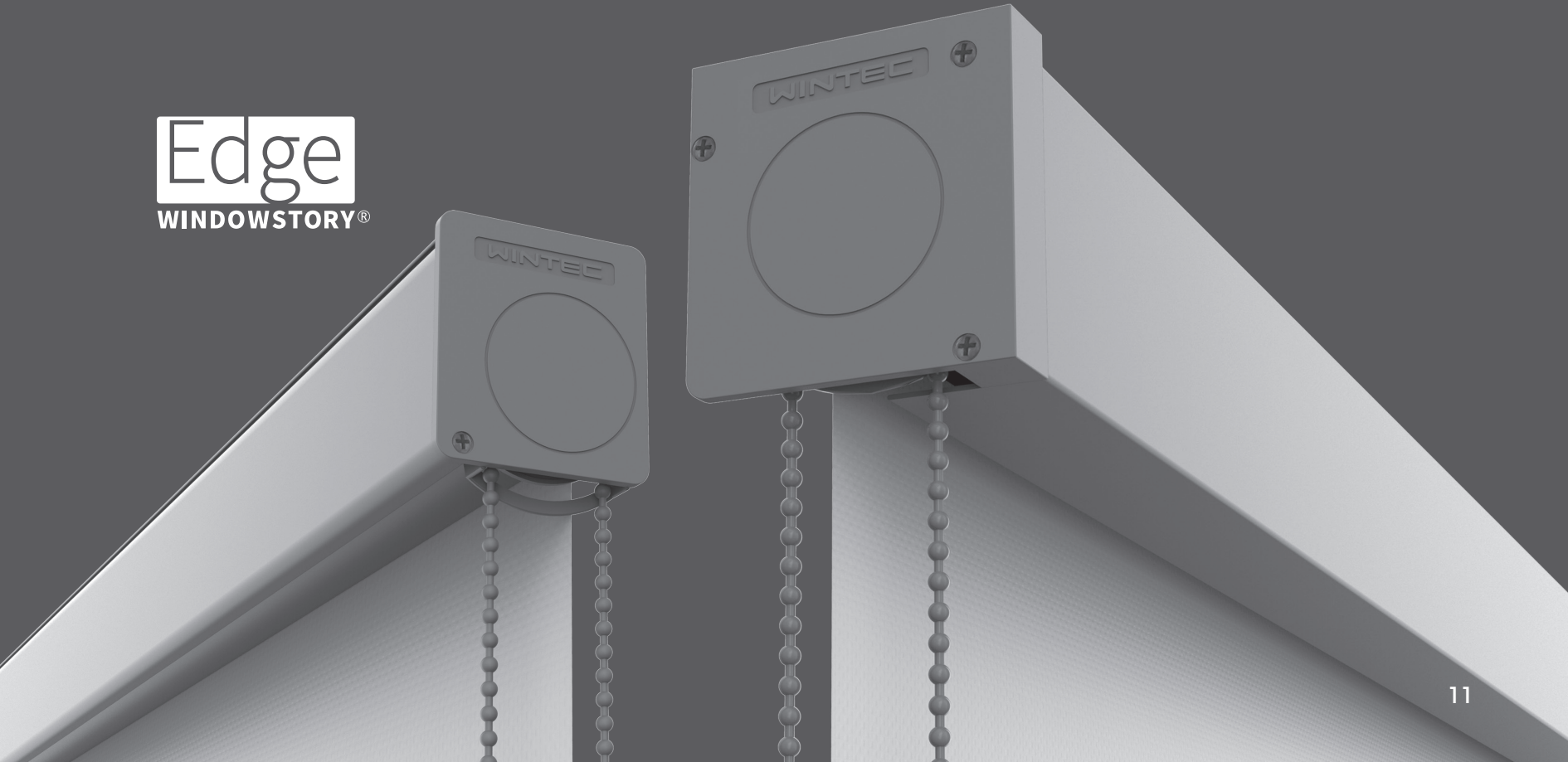
Our trendy designers have developed cassettes and profiles in a wide array of colors, styles, shapes, and sizes. Always design and fashion forward; We have single tube, double tube, square, curved, gloss, matte, embossed, etc. We have a solution for every application.

UNITY

Make your space balanced and unified by, customizing our various systems, such as a manual, motored and ABS, in the same design and color options.



Edge
WINDOWSTORY®



WINDOW STORY 2018 COLLECTION



*DESIGN SHADES
EDITOR'S
3D SHADES
ZEBRA SHADES
ROLLER BLINDS
HONEYCOMB BLINDS*



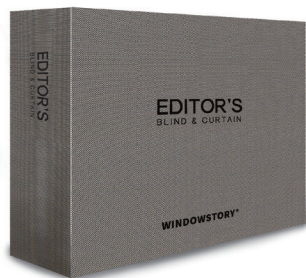
DESIGN SHADES

You are only limited by your imagination. Many of Wintec fabric collection can be digitally printed. Family photos, kids design, brands or your company logo.





EDITOR'S BLIND & CURTAIN



The EDITOR'S Collection showcases a fantastic design concept coordinating our luxurious curtain fabrics with our popular and 3D, Zebra, & Roller shade fabrics.

The variety of blackout, sheer, linen, and chenille fabrics, incorporated with 3D Shade products like, Waltz, Tango, and Delux, offers consumers a simple and superior design solution.



3D SHADES
ECOLUX[®]



ECOLUX is the name of WINDOW STORY's 3D Shade collections. Multi-layered Ecolux fabric is comprised of two layers of sheer woven together with one layer of fabric; this unique structure offers among others excellent sound absorption, energy efficiency, and UV protection properties. Easy operation of a single looped control cord enables up/down movement, light control, exterior view and privacy protection. WINTEC's 3D Shades are available in over 60 designs, which offer a versatile solution to any interior décor requirements.

- | | |
|--------------|------------|
| Ecolux Delux | Waltz |
| Ecolux Fresh | Dolce |
| Vivace | Bolero |
| Target | Sense plus |
| Serenade | Rumba |
| Tango | |



Valentine

Sonatine

Lunatine

Viewty

Romance



ZEBRA SHADES

Layered Shades

The Zebra Shade is a dual layerd roller shade which consisting of alternating horizontal layers of transparent sheer and opaque fabric vanes. Each layer moves independently to glide between each other. This, creates an open/closed effect, allowing precise light, & privacy, and exterior view control. Available in SONATINE, VIEWTY, ROMANCE, VALENTINE, and LUNATINE, we have more than 100 design in this collection. It is the largest collection of zebra fabrics in the world.

ROLLER BLINDS

The classic roller blind available in Blackout, Sunscreen, Modern Roll, Natural Look and Sheer Jacquard styles.

Each fabric style offers various functions such as room darkening, light filtering, and fire retardancy. Ever so popular with its wide range of systems and colors.



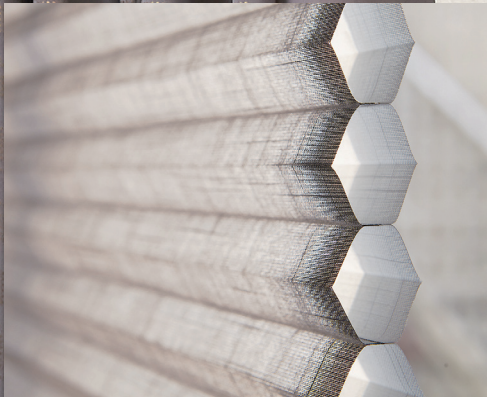
Modern roll

Natural roll

Sunscreen

Sheer jacquard

Black out



HONEYCOMB BLINDS

With its unique hexagonal cell structure, Honeycomb Blinds offer superior insulation and sound absorption by trapping air, in addition to its simple and aesthetically pleasing design.





WINDOW STORY is the franchise retail brand of WINTEC KOREA. There are over 70 stores throughout Korea and offers consumers unrivaled quality, design, variety and customer service.



WINTRON is a cylindrical and linear motor system used in a wide range of products, such as 3D Shade, Zebra, Roller ,Honeycomb, Venetian blinds ,and curtains with motorization. Wintron can be geared for 5 newton torque!

Auto Balance System

AUTO BALANCE SYSTEM evolves the basic cordless system, and is extremely convenient. Using ABS, it is possible to create a neat and modern space concept. Most of all, it is a perfect solution for child and pet safety.



A premium modern lifestyle brand: WINFLEX is a modern compact box-style system which is perfect for both residential and commercial spaces. As a stand-alone brand WINFLEX is fully equipped and available with motorization.



This modern style brand offers trendy sensibility. Its compact design, lightweight parts, price and easy installation makes EFLEX very attractive to the consumer.



An economic brand for the masses. Low price, but high on style, function, and quality.